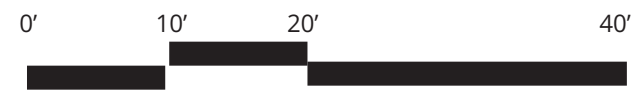
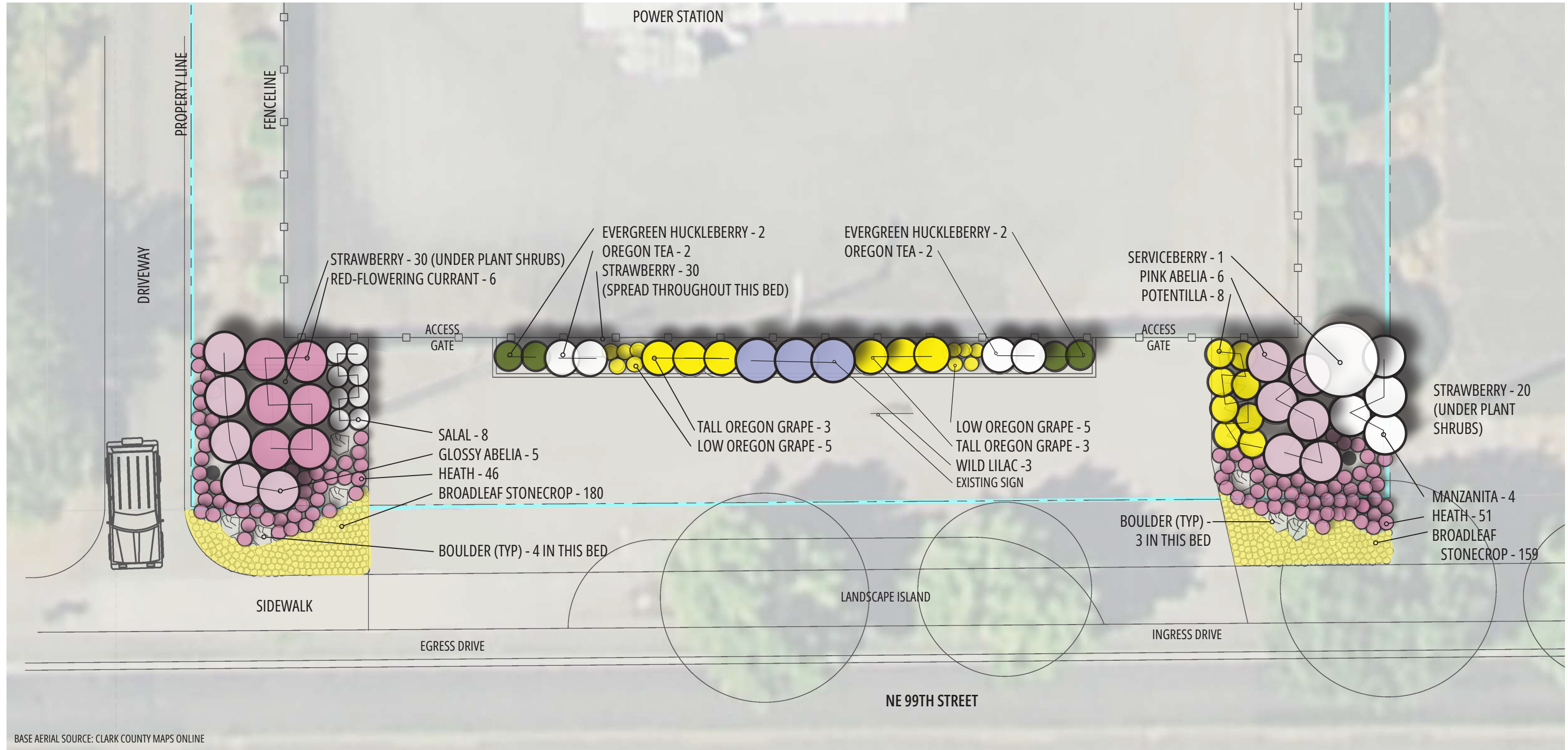


# SUBSTATION PLANTINGS - CONCEPT LAYOUT



SCALE APPROXIMATE

# SUBSTATION PLANTING LIST

IMAGE SOURCES: WASHINGTON NATURE PLANT SOCIETY, PORTLAND NURSERY, MONROVIA, NPD

TREES / SHRUBS

SMALL TREE



AUTUMN BRILLIANCE SERVICEBERRY

MED./TALL SHRUB

MED./TALL SHRUB

**PNW** PACIFIC NORTHWEST NATIVE PLANT!



RED-FLOWERING CURRANT



TALL OREGON GRAPE



WILD LILAC



OREGON TEA



GLOSSY ABELIA



PINK ABELIA



AUSTIN GRIFFITH'S MANZANITA

LOW SHRUB

LOW SHRUB



EVERGREEN HUCKLEBERRY



POTENTILLA

GROUND COVER

GROUND COVER



LOW OREGON GRAPE



KRAMER'S RED HEATH

PERENNIALS

PERENNIALS



BROADLEAF STONECROP



STRAWBERRY

\* Information sources : METRO (OR), CalScape, Portland Nursery, Nature's Haven, *Portland Plant List* , Sparrowhawk Nurserie, Sauvie Island Native Plant Nursery

ID	NO.	SCIENTIFIC NAME	COMMON NAME	CONTAINER	HEIGHT	WIDTH	MONTHLY BLOOM GUIDE / EVERGREEN STATUS												SUN/SHADE	WILDLIFE	NATIVE	POLLINATORS
							J	F	M	A	M	J	J	A	S	O	N	D				
<b>TREES / SHRUBS</b>																						
ABGR	5	ABELIA GRANDIFLORA	GLOSSY ABELIA	3 GAL.	6'	6'													☀️☀️	🐦🐝	Native bees, hummingbirds	
ABXE	6	ABELIA x ' EDWARD GOUCHER'	PINK ABELIA	3 GAL.	5'	5'												☀️☀️	🐦🐝	Native bees, hummingbirds		
AMAL	1	AMELANCHIER GRANDIFLORA 'AUTUMN BRILLIANCE'	AUTUMN BRILLIANCE SERVICEBERRY	5 GAL. - 8' TALL	12'	10'												☀️☀️	🐦🐝	Native bees (Andrenidae, Halictidae), butterflies (Weidmeyer's admiral, orange tip. elfin) flies		
ARSUN	4	ARCHTOSTAPHYLOS MANZANITA 'AUSTIN GRIFFITHS'	AUSTIN GRIFFITHS MANZANITA	3 GAL.	8'	8'												☀️	🐝	YES Native bees (Apidae, Megachilidae)		
CESA	4	CEANOTHUS SANGUINEUS	OREGON TEA	3 GAL.	6'	5'												☀️	🐝	YES Native bees, larval host for Pale Swallowtail butterfly		
CETH	3	CEANOTHUS 'JULIA PHELPS'	JULIA PHELPS WILD LILAC	3 GAL.	8'	8'												☀️	🐝	Native bees (Apidae, Halictidae, Megachilidae), butterflies (pale swallowtail, California tortoiseshell, echo blue)		
GASH	8	GAULTHERIA SHALLON	SALAL	3 GAL.	4'	3'												☀️☀️	🐦🐝	YES Native bees (Apidae, Megachilidae), hummingbirds		
MAAQ	6	MAHONIA AQUIFOLIUM	TALL OREGON GRAPE	3 GAL.	8'	5'												☀️☀️	🐝	YES Native Bees (Bombus, Osmia), butterflies (Painted lady)		
MANE	10	MAHONIA NERVOSA	LOW OREGON GRAPE	3 GAL.	2'	2'												☀️	🐝	YES Butterflies (Painted lady)		
POFR	8	DASIPHORA FRUTICOSA	SHRUBBY CINQUEFOIL	3 GAL.	4'	4'												☀️	🐝	Native bees and butterflies		
RISA	6	RIBES SANGUINEUM	RED-FLOWERING CURRANT	3 GAL.	8'	6'												☀️☀️	🐦🐝	YES Native bees (Andrenidae, Apidae), hummingbirds, butterflies (Hoary comma)		
VAOV	4	VACCINIUM OVATUM	EVERGREEN HUCKLEBERRY	3 GAL.	5'	4'												☀️☀️	🐝	YES Several varieties of moths, Elfin butterflies		
ERIC	97	ERICA x DARLEYENSIS 'KRAMERS RED'	KRAMER'S RED HEATHER	3 GAL.	2'	2'												☀️	🐝	Native bees (Apidae, Megachilidae)		
<b>PERENNIALS</b>																						
FRVI	80	FRAGARIA ' LILA DIAMOND'	STRAWBERRY	1 GAL.	6"	3'												☀️☀️	🐝	YES Native bees, butterflies (Two-banded Checkered-Skipper) and moths (Filament Bearer)		
SESP	339	SEDUM SPATHULIFOLIUM	BROADLEAF STONECROP	1 GAL.	8"	1'												☀️	🐝	YES Native bees (Andrenidae, Apidae, Colletidae, Megachilidae), butterflies (Moss elfin)		

# CLARK PUBLIC UTILITIES

VAN DYKE SUBSTATION  
2280 NW 99TH ST, VANCOUVER, WA 98665

OCTOBER 2023



(360) 771.2925  
WWW.NATUREPLAYDESIGNS.COM